



**ESD & ANTISTATIC / CLEAN ROOM PRODUCTS**  
**SOLDERING TOOLS AND EQUIPMENTS**  
**ACCESSORIES & CONSUMABLES**  
**ESD FURNITURES**



**ONE STOP SOLUTION**  
**FOR ELECTRONICS INDUSTRY**

## Contents .....

ESD Wrist strap, Heel Strap, CGP , ESD Mat ...	Page 01
ESD slipper, shoe , ESD apron & Gloves..	Page20
Sticky mat , Wipes, ESD Tweezers & Brush , vacuum pick tool	Page 03
solder mask , ESD mat cleaner, dispensing bottle , Thermometer ....	Page04
ESD crates, trays , storage Bins, PCB trays, ESD Magazine rack...	Page 05
ESD work station , ESD chairs...	Page 06
ESD storage crate , trolleys, ESD tiles...	Page07
ESD Smoke absorber, Ultra sonic cleaner, automatic tape dispenser...	Page08
Soldering & SMD Rework station...	Page 09
ionizing air gun, blower, Soldering pot...	Page10
Screw driver, screw feeder, torque meter...	Page11
Static test, Measuring & Control instruments...	Page12
Magnifying lamps...	Page13
Microscope & Dry Cabinet ...	Page14
ESD covers, tapes...	Page15
Disposable gloves, mask, cap, shoe covers...	Page16



## ESD wrist strap with coil cord

### Specification:

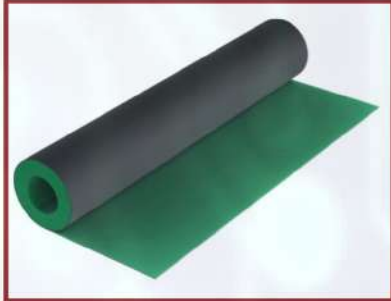
Wire diameter : 2.2mm / Coil cord length : 1.8mtr  
Resistance: 10<sup>11</sup>ohm(Ext), 10<sup>5</sup>ohm(int.)



## ESD heel strap / Grounder

### Specification:

Two layer rubber material with non-marking inner cup  
Ribbon /18" long conductive tab  
Velcro:3/4"Blacksole exterior <10<sup>5</sup> ohm  
Built in 1 Meg ohm resistor



## ESD Rubber Mat

### Specification:

Color : Top-Green/Bottom-Black  
Thickness : 2 mm  
Resistance : Top 10<sup>9</sup>-Bottom 10<sup>5</sup>ohms  
Mat size: 1 mtr X 10 mtr. (1 Roll)



## ESD Anti-Fatigue Mat

### Specification:

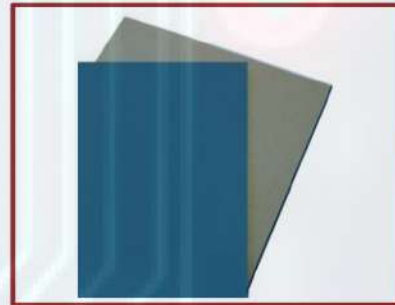
3 layers structure, surface is pvc,  
middle layer is carbamic resin,  
bottom layer is conductive rubber.  
Size : 610x910x 12MM / 17MM (with center part),  
Resistance: 10<sup>7</sup>-10<sup>9</sup> ohms



## Grounding Cord

### Specification:

Wire diameter : 2.2mm / Coil cord length : 1.8mtr  
Built in 1 Meg ohm resistor



## Antistatic dissipative 3 layer PVC mat

### Specification:

Color : Blue/Grey (Thickness : 2 mm)  
Resistance : 10<sup>7</sup>-10<sup>9</sup> ohms  
Mat size: 2 mtr X 15 mtr. (1 Roll)



## Common grounding point

### Specification:

Wire diameter : 2.2mm  
Coil cord length : 2 mtr  
Resistance : 100 ohms



## ESD field Service Kit

### Specification:

Color : Blue / Material : Natural Rubber  
Resistance : 10<sup>7</sup>-10<sup>9</sup> ohms



## Antistatic Apron

### Specification:

Color : White / Sky blue  
Material : 5mm Grid,99.17% Poly yarn  
0.83% Carbon Fiber / Resistance :  $10^6$  -  $10^9$  Ohms



## ESD Safe Shoe

### Specification:

ESD Safe Shoe white  
Resistance :  $10^6$  -  $10^9$  Ohms  
Size : 38 / 40 / 42 / 44 / 46



## ESD SPU Slipper

### Specification:

Resistance :  $10^6$  -  $10^9$  Ohms  
Size : 38 / 40 / 42 / 44 / 46  
Color : Black / Blue



## ESD Shoe cover with conductive strip

### Specification:

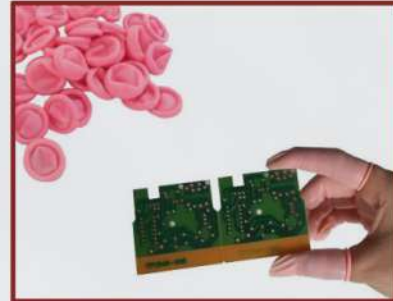
Nonwoven Shoe Cover Stitched With  
Conductive Strip / Resistance -  $10^4$  -  $10^7$  Ohms



## ESD PU Coated Palm GLOves

### Specification:

Color : White/Grey  
Size : S/M/L ( 10 pairs pack )  
Resistance :  $10^6$ - $10^8$  ohms



## Antistatic Finger Cots

### Specification:

Color : Pink / Thickness : 0.1mm  
Packing : 1440pcs Or 1000pcs Pack  
Material : Natural Rubber  
Resistance :  $10^8$ - $10^{10}$  ohms



## ESD PU Coated Finger Top Fit Gloves

### Specification:

Color : White/Grey  
Size : S/M/L ( 10 pairs pack )  
surface Resistance is  $10^6$ - $10^8$  ohms



## ESD Dotted Gloves

### Specification:

Material : Antistatic Clean Fabric, Pvc and Pu  
Resistance :  $10^6$ - $10^9$  ohms



## Cleanroom Lintfree Wipes

### Specification:

Class 10 & Class 100  
100% Polyester ( 120gsm )  
Laser Sealed Edges  
9" x 9" ( 23cm x 23cm )  
150 PCS/PACK



## Stainless Steel Tweezers

Material : SS 304 Grade  
Model : 2,2A,6 & 7  
Size : 120mm



## Sticky Mat

Size : 24" x 36"  
Color : Blue  
Packing : 10 Pad Per Box / 30 Sheet Per Pad



## Humidity Indicator Cards

Available : 3 Spot & 6 Spot  
10 to 30% / 30 to 50% / 10 to 60%  
300 Pcs Per Air tie Container



## Vacuum pick up pen

Make : HANDI-VAC ( USA )



## Esd safe IPA Dispenser

Capacity : 200 & 220ml



## ESD Plastic Tweezers

Surface Resistance 10<sup>6</sup>- 10<sup>9</sup> ohms



## ESD Brush

Surface Resistance 10<sup>6</sup>- 10<sup>9</sup> ohms

## Solder Mask ACL 8691



### Features:

- Compatible with rosin, lead-free, and watersoluble fluxes
- Dries fast, peels off easily
- Leaves no residue or contaminants
- Heat stable to: 510oF (265oC)
- Non-corrosive and safe for metals
- RoHS compliant
- Product 8691 (236g) squeeze bottle; 12 per case



**Flux bottle with needle**  
Capacity: 60ml



**Refillable flux pen**  
Bon 102 Bonkote

## ESD Mat & Table Top Cleaner ACL 6001 & 6002



### Features:

- Cleans, rejuvenates, and extends the life of ESD mats
- Contains no alkali or ammonia
- Contains no chemical on RoHS and REACH SvHC
- No GHS classification
- Meets or exceeds Mil 81705 & NFPA 56A with an electrostatic decay time of .1 second according to Federal Test Method 4046
- Product #60011-quart bottle; 12 per case (trigger sprayer)
- Product #60021-gallon container; 4 per case



**Flux bottle with Brush**  
Capacity: 60ml

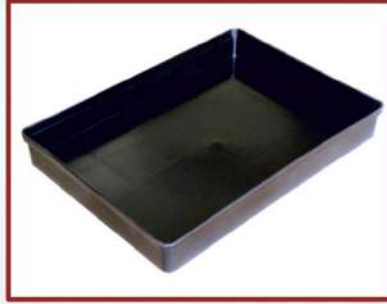


**Cutter**  
Model: TRE-03-NB  
Make : Piergiacomini



### ESD conductive crate

ESD Crate Size Outer Dia  
 300 x 205 x 90mm  
 420 x 310 x 155mm  
 615 x 430 x 120mm  
 600 x 400 x 175mm  
 610 x 415 x 245mm  
 Surface resistance 10<sup>5</sup> ohms



### ESD conductive tray

Surface resistance 10<sup>6</sup> ohms  
 Size : OD 315 x 230 x 40MM  
 Size : OD 450 x 300 x 60MM



### ESD Conductive corrugated box

Surface resistance 10<sup>5</sup> to 10<sup>7</sup> ohms  
 Thickness - 3mm & 5MM  
 Customized can be made as per request



### ESD PCB Trays L shape

Surface resistance 10<sup>6</sup> ohms  
 Number Of Slots 25  
 Size : 270 X 210 X 95mm



### ESD PCB Tray I shape

Surface resistance 10<sup>6</sup> ohms  
 Number Of Slots 25  
 Size : 470 X 140 X 35mm



### ESD Conductive Waste Bin

Size : 300mm Top Dia  
 Bottom Dia 230mm / Height : 330mm  
 Surface Resistance 10<sup>5</sup> - 9 ohms



### ESD Conductive Component Organiser - ACo25C

**Specification:**  
 Cabinet with 25 small drawers  
 Cabinet Size: 400 x 250 x 160mm  
 Drawers Size : 150 x 75 x 35mm



### ESD Magazine rack

Surface resistance: 10<sup>4</sup> ~ 10<sup>6</sup> ohms  
 Common types and heat-resistance  
 Temperature : 80C  
 Overall Size: 355 x 320 x 563mm.  
 Can accommodate 50 pieces of PCB.



### ESD Conductive Components Bins

Art No.	Outside Dimensions in mm			Inside Dimensions in mm		
	Length	Width	Height	Length	Width	Height
SB1-C	125	100	60	117	80	52
SB2-C	170	100	85	157	80	75
SB3-C	220	130	125	200	115	115
SB4-C	290	178	143	265	155	130
SB5-C	290	363	145	265	340	130
SB6-C	440	180	145	415	154	130
SB7X-C	435	400	215	405	360	208

**ESD Safe Workstation Table :** Workstation Tables are Fabricated With MS Or Aluminum Extrusion  
Customized Table Are Made With Customer Requirement



**ESD Chair - BS 296**

**Specification:**

Material : Antistatic PU Leather Black  
Dimension : Back Rest 15" x 17"  
Chair Seat : 18" x 18"  
Surface Resistance : 10<sup>3</sup> ~10<sup>6</sup> ohms or  
10<sup>6</sup> ~10<sup>8</sup> ohms



**ESD Chair - BS 298**

**Specification:**

Material : Conductive Fabric Grey  
Dimension : Back Rest 15" x 17"  
Chair Seat : 18" x 18"  
Surface Resistance : 10<sup>3</sup> ~10<sup>5</sup> ohms or  
10<sup>6</sup> ~10<sup>8</sup> ohms



**ESD Chair - BS 300**

**Specification:**

Material : Conductive Soft PU  
Dimension : Back Rest 12" x 15"  
Chair Seat : 16" x 16"  
Surface Resistance : 10<sup>3</sup> ~10<sup>5</sup> ohms or  
10<sup>6</sup> ~10<sup>8</sup> ohms

**Option : Extra Height & Foot Ring Adjustable**

## ESD PCB Storage cart

Size: 850 x 600 x 1300 mm  
 Side Panel: 460 x 1000 mm  
 Material: Stainless Steel  
 Wheel size: 4"  
 Thickness of side panel: 12.5mm  
 Capacity of wire shelves: 100pcs  
 PCB board for each divider line  
 No. of shelf dividers: 3 lines  
 Total weight of cart: 40kg



## ESD- Storage Cart

Chrome Shelf 610mm x 1219mm x 1800mm  
 4pcs per set with conductive wheels  
 Tube dia : 25.4mm / Tube Thickness 1.4mm  
 Surface treatment: chroming,  
 stainless steel and Resin coating.  
 Weight Capacity: 20kg-350kg/shelf \*  
 Salt spray test: 48hours  
 The height can easily adjust

## ESD trolley



## Stainless steel trolley

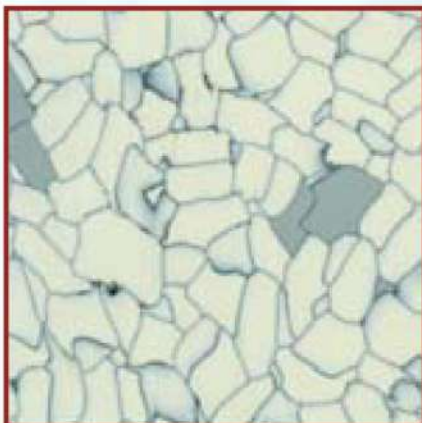


## ESD BIN trolley



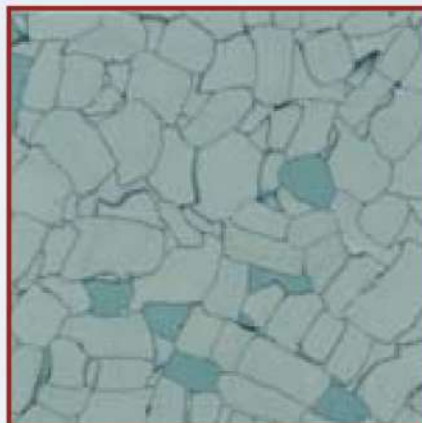
Customized Trolley are made with customer requirement

## ESD PVC Tiles

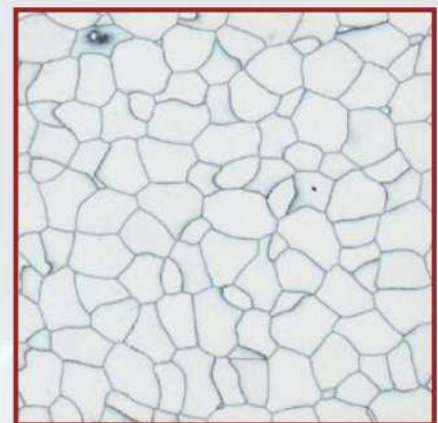


### BSM 3001

Static-dissipative PVC floor tile: 106-109  
 Size: 600x600mm / Thickness: 2mm



### BSM 3002



### BSM 3003

## Fume Extractor System



Model	F6002
Voltage	110V/220V
Power	200W
Ducts	2
Systemic Flow	2x150m <sup>3</sup> /h
Air Velocity	2x11m/s
Filtering Efficiency	0.3µm 99.97%
Length of Duct	Ø75mmx1.4m
Noise	<60dB
Dimensions(mm)	420x245x400
Weight	13kg



### Features:

1. Metal body structure, strong and durable.
2. Noise reduction design, quiet operation.
3. Triple-filter design ensures thorough purification.
4. High-quality alloy fan achieves great suction power.

## ULTRA SONIC CLEANER



### Specification:

Model : PS-20A  
 Ultrasonic Frequency 40,000 Hz  
 Tank Material Stainless Steel SUS304  
 Tank Capacity : 3.2 L / Timer 1-30minutes ,Digital timer  
 Power Supply AC 220 ~ 240V, 50 / 60 Hz / Ultrasonic Power 120W  
 Heating Power 100 W Digital Heating  
 Unit Size 270 x 170 x 240 mm ( L x W x H )  
 Tank Size 240 x 135 x 100 mm ( L x W x H )  
 N.W. 3.8 kg

## Fume Absorber 493



### Specification:

Model : 493  
 Power Consumption : 16W  
 Power Supply : AC220V, 50Hz  
 Absorption Capacity Approx. 1.07m<sup>3</sup>/min.  
 Outer Dia 220(W) x 270(H) x 168(D) mm  
 Weight : 1.5 kg



## M - 1000 Automatic Tap Dispenser

### Specification:

Applicable Tape Width: 7 ~ 50mm  
 Cut Length: 5 ~ 999mm, Digital Length Adjustment.  
 Accuracy of cut: +/-1mm  
 Power Supply : AC 110V / 60Hz Or AC 220V / 50Hz  
 Dimension : 137 x 218 x 150mm / Weight 2.4kg



## Soldering Station SLD 936

### Specification:

Temp Range: 200-480 °C  
 Power consumption: 60W  
 Temp Control accuracy: 1±C (no load)  
 Res Between tip & ground: <2ohm  
 Vol Between tip & ground: <2mV  
 Input /Output Voltage: 220V/50Hz/24V



## SMD Rework station SLD 853

### Specification:

Voltage of Power : 220VAC  
 Max Power Consumption : 540W  
 Hot Air Temp Range : 100-450 DegreeC  
 Length of the Handle : 1.3M



## Soldering Station With Auto Tin Feeder

### Specification:

Model : BK3500  
 Power Rating : 120W  
 Temperature Range : 200~480°C  
 Tip Resistance to the ground : ≤2Ω  
 Tip to the ground Potential : ≤2mV  
 Temperature stability : ±2°C (at 25/45%)  
 Feeding Speed : 14mm/s~35mm/s  
 Feeding Volume (Auto Mode) : 0.5~123mm  
 Wire Dia : 0.4~1.6mm



## Soldering Station Digital

### Specification:

Model : BK938D  
 Power Rating : 90W  
 Temperature Range : 180~450°C  
 Tip Resistance to the ground : ≤2Ω  
 Tip to the ground Potential : ≤2mV  
 Temperature stability : ±2°C (at 25/45%)



## SLD-191A Thermometer

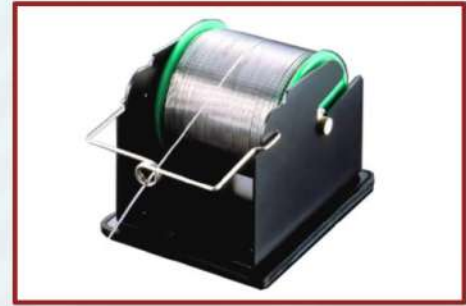
### Specification:

Test the temperature of soldering iron precisely and quickly Clear LCD indication Sensors are easy to replace. Wide testing temperature range of 00C-6000C



## HAKKO SENSOR 191-212

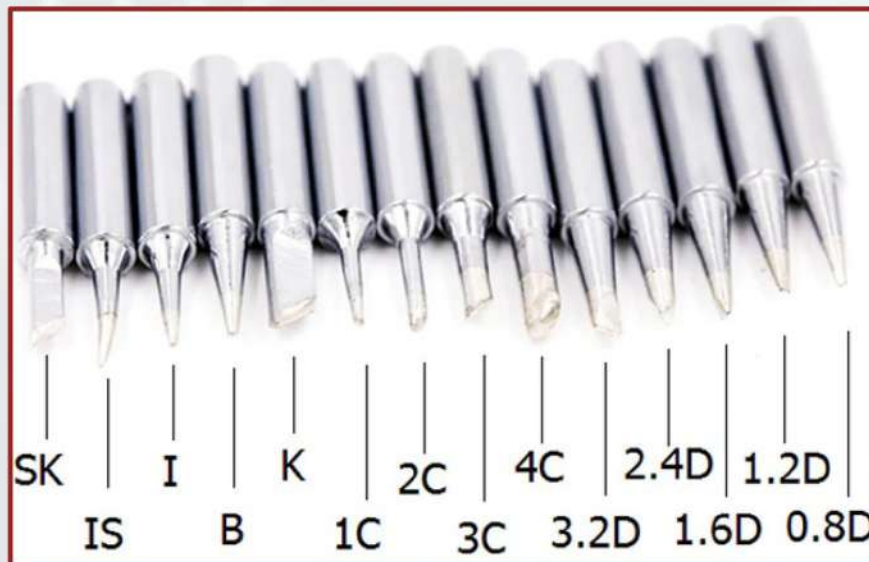
10pcs Per Pack



## SOLDER WIRE STAND

## Soldering Tips

HAKKO / SLD / BAKON



## Bench Top Ionizing Air Blower

### Specification:

Current Consumption : 0.25A / 0.12A  
Air Coverage : 40cm x 60cm  
Size : 190 (L) x 110(W) x 245(H) mm  
Weight : 3 Kg  
Air Volume : 45~110 CFM



## Solder Pot

### Square Titanium Lead-Free

#### Specification:

Model : 107 lead - Free  
Power Rated : 500W  
Temp Range : 0-600 °C  
Melting Capacity : 2.3KG  
Solder Bath Sizes :100×70×45 (mm)



## Ionized Air Gun

### Specification:

Input Voltage : 110V / 220V  
Power Consumption : 88VA  
Size of H.V. Transformer  
200(L)x135(W)x89(H)mm  
Weight : 4kg  
Maximum Pressure : 5Kg/cm<sup>2</sup>  
Air Consumption (S) : 38L/m  
Air Consumption (M) : 45L/m  
Air Consumption (L) : 63L/m  
Discharge time (5000V-500V at 15cm) : <1.3S  
3Lon Balance : -50V ~ +50V

## Electric Screw drivers



## Electric Screw Feeder

**BSD**®



Series	Model	Input Voltage	Torque(kgf.cm)	Power Consumption	Speed(r.p.m)	Screw Size(mm)	Starting Method	Power Controller	Bit Type	ESD	CE	RoHS	
DC-TYPE AUTOMATIC SCREWDRIVERS	BSD-(C)3000L	DC 24 or 32V	0.3~3.5	25W	1000/700	1.0~2.3	TRIGGER START	BSP-32HL(VR)-40W (BSP-C32HL)	A,B C,D	v	v	v	
	BSD-(C)3200L	DC 24 or 32V	0.6~7	25W	1000/700	1.4~2.6				v	v	v	
	BSD-(C)3300L	DC 24 or 32V	1~10	25W	670/470	1.6~3.0				v	v	v	
	BSD-(C)6200L/P	DC 24 or 32V	L(1-12)/P(2-12)	48W	1000/700	1.6~3.0				v	v	v	
	BSD-(C)6600L/P	DC 24 or 32V	3~16	48W	1000/700	2.3~3.5				v	v	v	
	BSD-(C)6600LF/PF	DC 32V	LF(1-8)/PF(2-8)	48W	2000	1.6~3.0				v	v	v	
	* (C) Only use with SKP-C32HL counter	BSD-(C)8000L/P	DC 24 or 32V	5~18	50W	1000/700	2.0~3.5	TRIGGER/ PUSH START	BSP-32HL(VR)-60W (BSP-C32HL)	A,B,D	v	v	v
		BSD-(C)8200L/P	DC 24 or 32V	7~24	50W	750/520	2.6~4.0				v	v	v
		BSD-(C)8800L/P	DC 24 or 32V	8~30	50W	530/350	3.0~5.0				v	v	v
		BSD-(C)8800LF/PF	DC 32V	2~10	50W	2000	2.0~3.0				v	v	v
		BSD-(C)9300L/P	DC 24 or 32V	6~22	55W	1000/700	2.6~4.0				v	v	v
		BSD-(C)9400L/P	DC 24 or 32V	10~30	55W	750/520	3.0~5.0				v	v	v
		BSD-(C)9500L/P	DC 24 or 32V	15~45	55W	530/350	4.0~6.0				v	v	v
		BSD-(C)9300LF/PF	DC 32V	5~12	55W	2000	2.3~3.5				v	v	v

## Torque Meter



Model Type	BTM-100	BTM-10
Testing Range	1.5~90.0 lbf.in	0.15~9.00 lbf.in
	1.5~100.0 kgf.cm	0.15~10.00 kgf.cm
	0.15~10.00 N.m	0.015~1.000 N.m
Accuracy	±0.5% (Full Scale)	
Display	LCD 4 digits display	
Testing Direction	CW-CCW (Right-Left direction)	
Testing Mode	PEAK	Maintain max. value of negative loading
	TRACK	Negative loading display and null adjustment
Testing Units	lbf.in/kgf.cm/N.m (interchangeable)	
Recharge Time	About 3 hrs	
Operation Time	Operating 10 hrs continuously	
Battery Life-Time	Rechargeable up to more than 300 times (according to how the product is operated)	
Power Shut Down Time	Automatic shut down when leaving unused in 10 mins	
Weight (kg)	1.8kg	
Dimensions (mm)	230(W)X123(D)X65(H)	
Charger	Input AC 100V-240V 50/60HZ ; Output DC 12V	
Accessories	BJ-50, BJ-10K	BJ-10, BJ-3



## Combo tester CT-01 with stand

### Specification:

Size / Weight: Instrument 160 x 95 x 40 mm 200 gm  
 Stand 470 x 360 x 1000mm (Height) 5kg  
 Pass Band : Wrist Strap 0.75 to 10.0 meg ohm  
 Footwear 0.75 to 35.0 meg ohm  
 Em Lock : Optional / Accuracy : + 10%  
 Power Supply : 9 V Battery  
 Calibration : Recommended every 12 months  
 Traceability : To National Standards



## Surface resistivity meter

### Specification:

Measurement range :  $10^3$  to  $10^{12}$  ohms/sq  
 Measurement accuracy : Half decade.  
 Resolution : one decade.  
 Excitation voltage : 9v  
 Indication : Visual by LEDs  
 Test actuation : Press to ON Switch.  
 Power supply : 9 volt DC battery



## Continuous Workstation Monitor Z107

### Specification:

Pass threshold : Under 10 meg ohms for wrist strap.  
 Under 10 meg ohms for MAT  
 Indications : Pass - Green LED  
 Fail - Flashing red LED for wrist strap  
 Steady red LED for MAT  
 Audible alarm for fail mode  
 Power supply : 6- 9VDC 100ma  
 Weight : 75 gms / Dimension : 110 x 60 x 32 mm



## Wrist Strap & Footwear Tester WSFT01

### Specification:

Pass range wrist strap : 0.75 to 10.0 meg ohm  
 Footwear : 0.75 to 100 meg ohm.  
 Range selection by slide switch  
 Indications : Dual colour LED : Pass - Green / Fail - Red  
 Audible alarm for fail mode accuracy +/- 10% Power supply  
 9v DC battery : Low battery warning less than 7 volts  
 Dimensions : 135 x 70 x 25



## Hammer Type Esd Surface Resistance Tester SL-030B

### Specification:

Measurement range :  $10^3$  to  $10^{13}$  ohms/sq  
 Measurement accuracy : Half decade.  
 Resolution : one decade.  
 Excitation voltage : 10v for  $<10^5$ , 100v for  $>10^6$  ohms  
 Indication : By multi-colour LEDs  
 Test actuation : Press to ON Switch.  
 Power supply : 9 volt DC battery



**6022 LED Magnifier lamp White**

**Specification:**

Lens material : glass  
 Lens size: 5"  
 Diopter : 5 & 8 Diopter  
 Voltage : 100V/ 110-120V / 220-240V  
 Light source : 56PCS SMD LED  
 Supplied with electronic ballast  
 Standard mount : table clamp  
 Colour available: white

**Magnifier lamp ESD Safe  
 8066D2-4C - LED  
 8066D2-4C - Fluorescent**

**Specification:**

Lens material : glass  
 Lens size: 5"  
 Diopter : 5 & 8 Diopter  
 Voltage : 100V/ 110-120V / 220-240V  
 Light source : T5 22W Circular fluorescent lamp  
 Light source : 56PCS SMD LED  
 Supplied with electronic ballast  
 Standard mount : table clamp  
 Colour available: white , black



**8093 Magnifier Lamp Black**

**Specification:**

Lens material:glass  
 Lens size:4"  
 Diopter :3 diopter+12diopter  
 Voltage:100V/110V-120V/220-240V  
 Light source:T4 12W circular fluorescent tube  
 Supplied with electronic ballast  
 Standard mount:table base  
 Colour available:white blackect.



## Microscope

### Specification:

Model Number: M0745-T  
 Theory: Stereo Microscope  
 Drawtube: Monocular  
 Product name: trinocular stereo zoom microscope with projector with camera  
 Model: SZM0745-T  
 Eyepiece: WF10X/20mm(WF15X/15mm,WF20X/10mm)  
 Zoom Objective: 0.7X-4.5X  
 Auxiliary Objective: 0.5X/165mm. 1.5X/45mm. 2X/30mm.  
 Diopter: +5 to -5

## Moisture Proof Cabinet ( Humidity Dry Cabinet)



### Specification:

Model Number: M-1428-6 / D-1428-6 / E-1428-6 / G-1428-6  
 Humidity Range: 20-60%RH / 10-20%RH / 1-10%RH / 1-60%RH  
 External Size (mm): W1200\*D710\*H1920  
 Inner Size(mm): W1198\*D680\*H1738  
 Material & Finishing : Cabinet: High Quality steel Plate: Hard-Coated Resin Paint  
 Door : Glass Window Powerful Magnet Rubber Seal Maintain High Airtight  
 Max Capacity: 1428 Liter  
 Power Consumption(W/H): 0.5-47W/H(MAX370W) (AC 220V)  
 Power Source: AC110-115V(50/60HZ) Or AC220-240V(50/60HZ)  
 Removal Shelf: 5 ( Material: Steel Or Stainless )  
 Door Key: 6  
 Hygrometer: 1  
 Caster: 4



## Moisture Proof Cabinet ( Humidity Dry Cabinet)



### Specification:

Humidity dry cabinet - 320 L ( Capacity )  
 Model -G 320A - 1 to 60% RH ( Humidity Range)  
 Model - M320A -20 to 60% RH ( Humidity Range)  
 Model - D320A - 10 to 20% RH ( Humidity Range)  
 External Size - W900 x D 450 x H1030 MM  
 Power consumption - 0.5 - 4.7 W ( Max 370W) AC220V  
 Body Material - Cabinet: high quality steel plate; Hard-coated resin paint  
 Door: Glass window Powerful magnet rubber seal maintain high airtight





### Kapton Tape roll

Size : 12mm,24mm,48mm x 33mtrs



### Red Masking Tape Roll

Size : 12mm & 24mm x 50mtr



### Grid tape Roll

Size : 12mm,24mm,48mm x 33mtrs  
Surface resistance -  $10^6$  to  $10^{10}$  ohms



### Floor marking tape roll

Standard Size : 2 x 30mtr  
Standard paper core:76.2mm  
Thickness - 180 Microns



### ESD cautions tape

Standard Size : 2" x 33mtrs



### Pink Antistatic cover

Surface Resistance  $10^8$  to  $10^{10}$  ohms



### Aluminium Moisture barrier bags

Thickness - 100 Microns to 160 Microns  
Static Shielding - < 20 Volts (EIA 541)  
Static Decay Rate - < 0.03 Seconds



### Static shield cover

Surface Resistance  $10^8$  to  $10^{10}$  ohms



**Latex gloves powder free**  
100 Pcs Per Box



**Vinyl Gloves clear**  
100 Pcs Per Box



**Shoe cover Nonwoven blue**  
100 Pcs Per Pack



**Shoe cover Plastic blue**  
100 Pcs Per Pack



**Manual Shoe cover dispenser**



**Shoe Cover With Clips G type hook**  
100 Pcs Per Pack



**Disposable face mask**  
2 ply & 3Ply elastic  
100 pcs per pack



**Disposable bouffant cap**  
100 Pcs Per Pack



**Disposable lab coat**  
Material : Nonwoven Fabric

## Our Valued Customers:





**Shiva Biradar**

9028847139/9049398555

## **VIMAL ENTERPRISES**

Mig, Mag, Spot, Arc, Tig, Rectifier (Inverter)  
All Types Of Robots, PLC Programming & Spare Parts.  
All Types Of Welding Machine & Spare Parts.

✉ [vimalenterprises555@rediffmail.com](mailto:vimalenterprises555@rediffmail.com)



Plot No. 11A/2, "S" Block, Near Sai Tools,  
Indrayani Nagar, Bhosari, Pune- 411 026.

GST NO. 27BHUPB6949P1ZA